

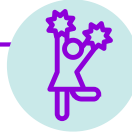
BUILDING YOUR CREW

You can't do it alone. Many people play many roles in our lives, but it's important to acknowledge who these people are so we can turn to them when we need them most. Take a moments to go through each role and write someone down. Build your crew!



THE MENTOR

Who do you turn to for counsel and guidance?



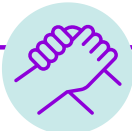
THE CHEERLEADER

Who provides encouragement when you need it most?



THE COMRADE

Who is your partner in crime?



THE HELPING HAND

Who can you count on to help when you're in a pinch?



THE CONNECTOR

Who is your social or professional matchmaker?



THE FIXER

Who do you turn to when you want to troubleshoot?



THE EXPERT

Who do you turn to for inside knowledge?



THE EXAMPLE

Who do you look up to that seems to have it figured out?



THE INSTIGATOR

Who motivates you to jump in and start something?

NOW TAKE SOME TIME TO REFLECT ON YOUR CREW & HOW YOU WANT TO CONNECT WITH THEM.

Which roles are most important to your daily success? Which roles still need to be filled out?

What are a few ways to grow your relationships with each role? What ways can you gain new contributors to each role?
